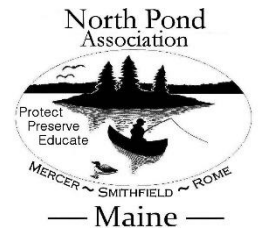


North Pond Association



North Pond Association Ongoing Activities

- Invasive Plant Paddles
- Host Plant ID workshops at Fairview Grange
- Pay for Courtesy Boat Inspectors (CBI's) cover the boat launch 7-7 from Memorial Day until Labor Day
- Rent the Porta Potty for use at the Boat Launch
- Conduct the Lake Smart Project
- Host the Are You Buff Enough Workshop to introduce Lake Smart implementation practices.
- Help pay for the Curly Leaf Pondweed (CLP) removal.
- Host the Boater Safety Course
- Earth Day Clean-up at the Boat Launch
- Send out monthly email blasts to members.
- Create 2 newsletters to share important information.
- Maintain and repair the dam.
- Work with 7 Lakes Alliance in applying for grants and completing 319 Erosion Control projects.
- Work with multiple partners to collect data to help create a Watershed Based Management Plan (WBMP). The public meeting to share the data and possible remediations will be held in August 2023.

Contact The NPA!

Website: Northpondmaine.org

- Pay Membership Dues
- Donate Online
- Direct Message using the "Contact Us" Tab

Facebook: The North Pond Association

2022 Phosphorus Levels

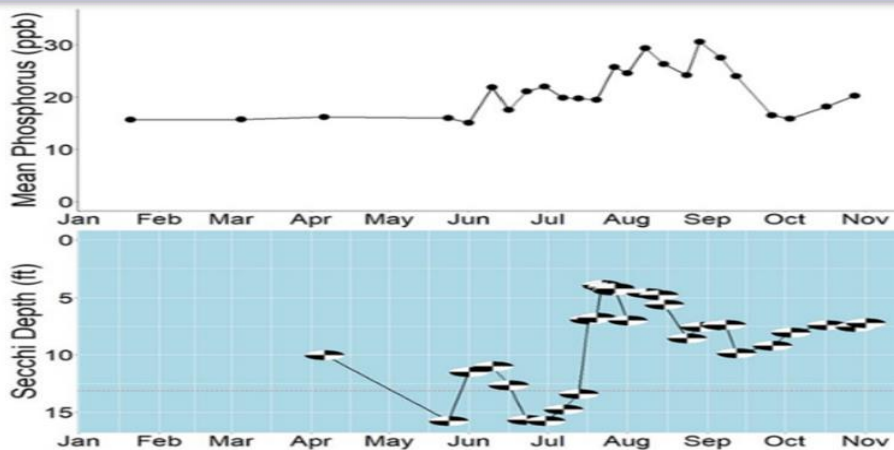
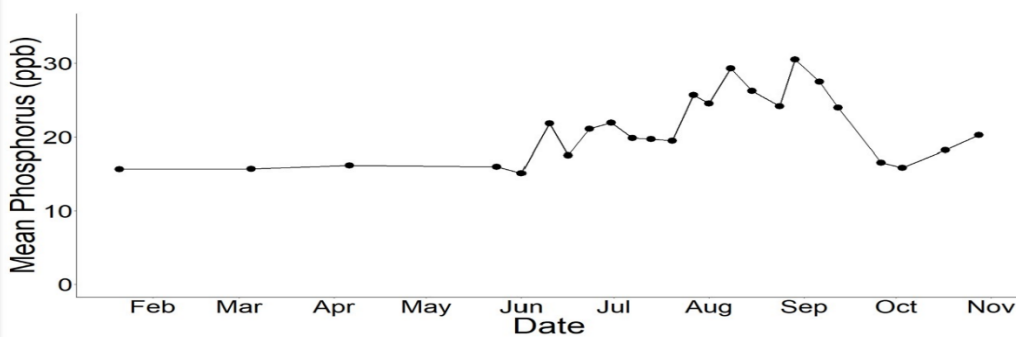
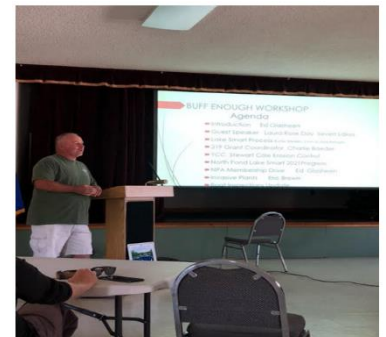


Figure 1: Average phosphorus (ppb) in North Pond during 2022 (top). Secchi Depth Transparency readings in North Pond during 2022 (bottom). Red line indicates the poor water quality cut off; any reading shallower than 13 feet.



NPA Board Member Ed Glasheen presenting at the Buff Enough Workshop, an annual workshop put on by the NPA.



A secchi disk reading being performed by Lake Scientist Danielle Wain, Lake Science Director at 7 Lakes Alliance.



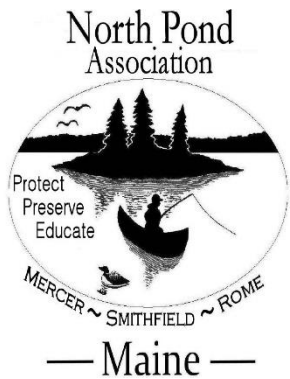
A paddler analyzing a plant specimen (non-invasive) during an invasive plant paddle on North Pond.



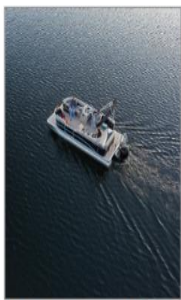
NPA member Sheila Leavitt getting ready to collect water samples following a heavy rainstorm.

Membership Information

- The NPA was established in 1986. Currently, there are over 130 members comprised of individuals, families, and businesses.
- Membership benefits include:
 - o Monthly informative email blasts
 - o Biennial newsletters
 - o Support of the Courtesy Boat Inspection (CBI Program)
 - o Support of the Watershed Based Management Plan (WBMP)
 - o Being part of the solution!
- The membership year runs from January 1st to December 31st. Membership dues are 100% tax deductible. Prices of membership dues:
 - o \$15- Individual
 - o \$25- Family
 - o \$50- Business Sponsor
- Dues can be securely paid on the NPA website via PayPal or mailed in. You can download the mail-in form by clicking the “Become a Member” button on our website.



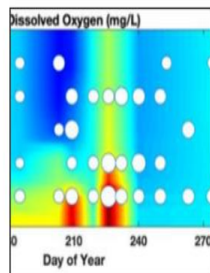
MAJOR COMPONENTS OF THE WBMP



Water Quality Monitoring & Analysis



Sediment Sampling & Analysis



Watershed Modeling & Internal Loading Analysis



NPS & Ag/Forestry Survey



Septic System Survey & Database



Municipal Ordinance Review



Public Outreach/Meeting



Water Quality Goal Setting & WBMP Development



Volunteers picking up trash and tidying the boat launch area on Earth Day Cleanup, an annual event organized by the NPA.



Cousins Charles, Morgaine, Clarissa, and Carson providing support and encouragement (and cookies!) to paddlers during the invasive plant paddle.